



华东师范大学 国际学生招生简章 研究生项目



**EAST CHINA
NORMAL
UNIVERSITY**

Graduate Programs of ECNU



■ 学制: 硕士: 2-3年 博士: 4年
Duration: Master Programs: 2-3 years Doctoral programs: 4 years

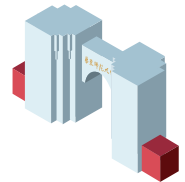
■ 开学时间: 每年9月初
Beginning: early September

■ 申请截止时间: 6月30日 (奖学金申请截止时间详见【奖学金】介绍)
Application Deadline: Jun.30th
(Scholarship application deadline please refer to the Scholarship Section)



Master Programs

硕士研究生专业目录



普陀校区硕士专业 Master Programs on Putuo Campus

院系所 Schools & Departments	招生专业名称 Programs	学制 YR	学费(年) Tuition (YR)
国际汉语文化学院 School of International Chinese Studies	国际中文教育 Teaching Chinese to Speakers of Other Languages	2	25000
	中国语言文学 (比较文学与世界文学方向) Comparative Literature and World Literature	3	25000
	中国语言文学 (比较文学与世界文学方向)- 全英文项目 Comparative Literature and World Literature -English-taught	3	35000
	中国语言文学 (汉语语言文字学方向) Chinese Philology	3	25000
	中国语言文学 (语言学及应用语言学方向) Linguistics and Applied Linguistics	3	25000
教育心理学系 Dept. of Educational Psychology	学习心理与发展 Learning Psychology and Development	3	25000
教育信息技术学系 Dept. of Educational Technology	教育技术学 Education Technology	3	28000
教育学部 Faculty of Education Science	教育学 (职业技术教育学方向) Vocational and Technical Education	3	25000
	教育学 (成人教育学方向) Adult Education	3	25000
	教育学 (高等教育学方向) Higher Education	3	25000
	教育学 (比较教育学方向) Comparative Education	3	25000
	教育学 (教育史方向) History of Education	3	25000
	教育学 (课程与教学论方向) Curriculum and Teaching Methodology	3	25000
	教育学 (教育学原理方向) Educational Principle	3	25000
	教育学 (教育文化与社会方向) Sociology and Educational Culture Studies	3	25000
	教育学 (教育经济与管理方向) Educational Economy and Management	3	25000
	教育学 (教育政策学方向) Education Policy Studies	3	25000

普陀校区硕士专业 Master Programs on Putuo Campus

院系所 Schools & Departments	招生专业名称 Programs	学制 YR	学费(年) Tuition (YR)
教育学部 Faculty of Education Science	教育学 (言语听觉康复科学方向) Speech and Hearing Science	3	25000
经济与管理学院 School of Economics and Management	旅游管理 Tourist Management	3	28000
	企业管理 Corporate Management	3	28000
	会计学 Accounting	3	28000
	工商管理 (MBA) Business Administration	2	154000
	金融学 Finance	3	28000
	国际贸易学 International Trade	3	28000
	信息资源管理 Information Resources Management	3	28000
	产业经济学 Industrial Economics	3	28000
公共管理学院 School of Public Administration	公共管理 (社会保障方向) Social Security	3	28000
	公共管理 (行政管理方向) Administration Management	3	28000
心理与认知科学学院 School of Psychology and Cognitive Science	心理学 Psychology	3	28000
计算机科学与技术学院 School of Computer Science and Technology	计算机科学与技术 Computer Science and Technology	3	28000
	计算机技术 Computer Technology	3	28000
软件工程学院 School of Software Engineering	软件工程 Software Engineering	3	28000
政治与国际关系学院 School of Politics and International Relations	政治学 (区域国别与大国关系方向) Political Science (International Relations)	3	25000
	政治学 (区域国别与大国关系方向)- 全英文项目 Political Science (International Relations) -English-taught	2	35000
	政治学 (政治学理论方向)- 全英文项目 Political Science (Political Theory) -English-taught	2	35000
设计学院 School of Design	设计 Design	3	32000
	设计- 全英文项目 Design -English-taught	2	35000

闵行校区硕士专业 Master Programs on Minhang Campus

院系所 Schools & Departments	招生专业名称 Programs	学制 YR	学费(年) Tuition (YR)	
传播学院 School of Communication	新闻与传播 Journalism and Communication	3	32000	
	新闻传播学 Communication	3	32000	
	广播电视 Radio and Television	3	32000	
	戏剧与影视 Drama and Film Studies	3	32000	
地理科学学院 School of Geographic Science	课程与教学论 Curriculum and Teaching Methodology	3	25000	
	地图学与地理信息系统 Cartography and Geography Information System	3	28000	
	自然地理学 Physical Geography	3	28000	
	气象学 Meteorology	3	28000	
	测绘工程 Surveying and Mapping Engineering	3	28000	
	人文地理学 Human Geography	3	28000	
法学院 Law School	法学 Law	3	25000	
	法律(非法学) Law (Non-law Majored)	3	25000	
	法律(法学) Law (Law Majored)	2	25000	
国际教师教育中心 International Teachers' Education Center	教育管理-英文 Education Management-in English	2	25000	
河口海岸科学研究院 Institute of Estuary and Coastal Research	港口、海岸及近海工程-中文/英文 Harbor, Coastal and Offshore Engineering -in Chinese/English	3	28000	
	海洋生物学-中文/英文 Marine Biology-in Chinese/English	3	28000	
	海洋化学-中文/英文 Marine Chemistry-in Chinese/English	3	28000	
	物理海洋学-中文/英文 Physical Oceanography-in Chinese/English	3	28000	
	海洋地质-中文/英文 Marine Geology-in Chinese/English	3	28000	
	自然地理学-中文/英文 Physical Geography-in Chinese/English	3	28000	
	生态学-中文/英文 Ecology-in Chinese/English	3	28000	
	环境科学与工程-中文/英文 Environmental Science and Engineering -in Chinese/English	3	28000	
	精密光谱科学与技术国家重点实验室 State Key Laboratory of Precision Spectroscopy	光学 Optics	3	28000
		光电信息工程 Optoelectronic Information Engineering	3	28000
历史学系 Dept. of History	世界史 World History	3	25000	
	中国史 Chinese History	3	25000	

闵行校区硕士专业 Master Programs on Minhang Campus

院系所 Schools & Departments	招生专业名称 Programs	学制 YR	学费(年) Tuition (YR)
马克思主义学院 School of Marxism	中国近现代史基本问题研究- 全英文项目 Study on the Basic Problems of Modern Chinese History -English-taught	3	35000
美术学院 School of Fine Arts	艺术学 Arts	3	32000
	美术与书法 Fine Arts and Calligraphy	3	32000
社会发展学院 School of Social Development	社会学(人类学方向) Anthropology	3	25000
	社会学(人类学方向)- 全英文项目 Anthropology -English-taught	3	35000
	社会学(人口学方向) Demography	3	25000
生命科学学院 School of Life Sciences	社会学(社会学方向) Sociology	3	25000
	基础医学 Basic Medicine	3	28000
生态与环境科学学院 School of Ecological and Environmental Science	环境工程 Environmental Engineering	3	28000
	生态学 Ecology	3	28000
	环境科学与工程 Environmental Science and Engineering	3	28000
数学科学学院 School of Mathematical Sciences	数学教育- 全英文项目 Mathematics Education -English-taught	3	35000
体育与健康学院 School of Physical Education and Health Care	民族传统体育学 Science of Ethnic Traditional Sports	3	32000
	体育教育训练学 Theory of Sports Pedagogy and Training	3	32000
	运动人体科学 Human Movement Science	3	32000
	体育人文社会学 Humane and Sociological Science of Sports	3	32000
	体育教学 Physical Education	2	32000
	运动训练 Sports Training	2	32000
	社会体育指导 Social Sports Instruction	2	32000
外语学院 School of Foreign Languages	翻译(俄语笔译方向) Russian Translation	2	25000
	翻译(日语笔译方向) Japanese Translation	2	25000
	翻译(法语笔译方向) French Translation	2	25000
	外国语言文学(日语语言文学方向) Japanese Language and Literature	3	25000
	翻译(英语笔译) English Translation	2	25000
	翻译(英语口语) English Interpretation	2	25000
通信与电子工程学院 School of Communication and Electric Engineering	信息与通信工程- 中文/英文 Information and Communication Engineering -in Chinese/English	3	28000

闵行校区硕士专业 Master Programs on Minhang Campus

院系所 Schools & Departments	招生专业名称 Programs	学制 YR	学费(年) Tuition (YR)
通信与电子工程学院 School of Communication and Electric Engineering	通信工程 (含宽带网络、移动通信等)- 中文/英文 Communication Engineering (Including Broadband Network, Mobile Communications Etc.)- in Chinese/English	3	28000
	集成电路工程- 中文/英文 Integrated Circuit Engineering- in Chinese/English	3	28000
	集成电路科学与工程- 中文/英文 Integrated Circuit Science and Engineering- in Chinese/English	3	28000
亚欧商学院 Asia Europe Business School	国际商务 (中法双学位)- 全英文项目 International Business (Double Degree)- English-taught	2	84000 不包含法国学费 Tuition in France not included
	国际商务 (单学位)- 全英文项目 International Business (Single Degree)- English-taught	2	84000
音乐学院 School of Music	艺术学 Arts	3	32000
	音乐 Music	3	32000
哲学系 Dept. of Philosophy	中国哲学 Chinese Philosophy	3	25000
	中国哲学- 全英文项目 Chinese Philosophy- English-taught	2	35000
中国语言文学系 Dept. of Chinese Language & Literature	比较文学与世界文学 Comparative Literature and World Literature	3	25000
	中国现当代文学 Modern and Contemporary Chinese Literature	3	25000
	中国古代文学 Ancient Chinese Literature	3	25000
	中国古典文献学 Study of Chinese Classical Text	3	25000
	汉语言文字学 Chinese Philology	3	25000
	文艺学 Theory of Literature and Art	3	25000
	语言学及应用语言学 Linguistics and Applied Linguistics	3	25000
	创意写作 Creative Writing	3	25000
物理与电子科学学院电子科学系 School of Physics and Electronic Science	电子科学与技术 Electronic Science and Technology	3	28000

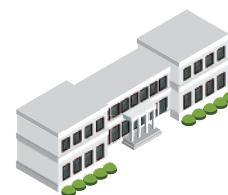
**EAST CHINA
NORMAL
UNIVERSITY**

Graduate Programs of ECNU



Doctoral Programs

博士研究生专业目录



普陀校区博士专业 Ph.D Programs on Putuo Campus

院系所 Schools & Departments	招生专业名称 Programs	学制 YR	学费(年) Tuition (YR)
国际汉语文化学院 School of International Chinese Studies	中国语言文学 Chinese Language & Literature	4	30000
	汉语国际教育 Teaching Chinese to Speakers of Other Languages	4	30000
政治与国际关系学院 School of Politics and International Relations	国际关系-中文/英文 International Relations- in Chinese/English	4	30000
	政治学理论-全英文项目 Political Theory- English-taught	4	45000
职业教育与成人教育研究所 Institute of Adult and Vocational Education	成人教育学 Adult Education	4	30000
高等教育研究所 Institute of Higher Education	高等教育学 Higher Education	4	30000
国际与比较教育研究所 Institute of Comparative Education	比较教育学 Comparative Education	4	30000
教育学系 Department of Education	教育史 History of Education	4	30000
	教育学原理 Educational Principle	4	30000
	教育文化与社会 Sociology and Educational Culture Studies	4	30000
	教育政策学 Education Policy Studies	4	30000
课程与教学系 Department of Curriculum and Teaching Methodology	课程与教学论 Curriculum and Teaching Methodology	4	30000
教育管理系 Department of Educational Management	教育经济与管理 Educational Economy and Management	4	30000
教育信息技术系 Department of Educational Technology	教育技术学 Education Technology	4	35000
教师教育学院 Department of Teacher Education	课程与教学论 Curriculum and Teaching Methodology	4	30000
教育心理系 Department of Educational Psychology	学习心理与发展 Learning Psychology and Development	4	30000
心理与认知科学学院 School of Psychology and Cognitive Science	应用心理学 Applied Psychology	4	35000
	基础心理学 Basic Psychology	4	35000
	认知神经科学 Cognitive Neuroscience	4	35000

普陀校区博士专业 Ph.D Programs on Putuo Campus

院系所 Schools & Departments	招生专业名称 Programs	学制 YR	学费(年) Tuition (YR)
心理与认知科学学院 School of Psychology and Cognitive Science	发展与教育心理学 Developmental and Educational Psychology	4	35000
	国际贸易学 International Trade	4	35000
经济与管理学院 School of Economics and Management	企业管理 Corporate Management	4	35000
	旅游管理 Tourist Management	4	35000
	信息资源管理 Information Resources Management	4	35000
公共管理学院 School of Public Administration	社会保障 Social Security	4	35000
	行政管理 Administration Management	4	35000
统计学院 School of Statistics	统计学 Statistics	4	35000
	统计学- 全英文项目 Statistics- English-taught	4	45000
计算机科学与技术学院 School of Computer Science and Technology	计算机软件与理论 Computer Software and Theory	4	35000
	计算机应用技术 Computer Applied Technology	4	35000
	智能教育 Intelligence Education	4	35000
软件工程学院 School of Software Engineering	软件工程 Software Engineering	4	35000
化学与分子工程学院 School of Chemistry and Molecular Engineering	物理化学 Physical Chemistry	4	35000



闵行校区博士专业 Ph.D Programs on Minhang Campus

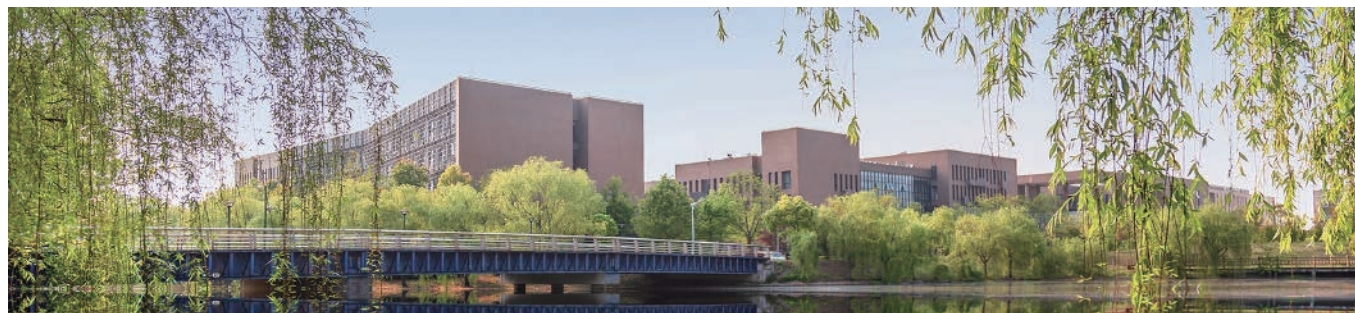
院系所 Schools & Departments	招生专业名称 Programs	学制 YR	学费(年) Tuition (YR)
中国语言文学系 Dept. of Chinese Language & Literature	比较文学与世界文学 Comparative Literature and World Literature	4	30000
	中国现当代文学 Modern and Contemporary Chinese Literature	4	30000
	中国古代文学 Ancient Chinese Literature	4	30000
	汉语言文字学 Chinese Philology	4	30000
	文艺学 Theory of Literature and Art	4	30000
	中国古典文献学 Chinese ancient philology	4	30000
	语言学及应用语言学 Linguistics and Applied Linguistics	4	30000
历史学系 Dept. of History	世界史 World History	4	30000
	中国史 Chinese History	4	30000
哲学系 Dept. of Philosophy	中国哲学 Chinese Philosophy	4	30000
	中国哲学- 全英文项目 Chinese Philosophy- English-taught	4	45000
法学院 School of Law	法学理论 Jurisprudence	4	30000
	宪法学与行政法学 Constitutional Law and Administrative Law	4	30000
	刑法学 Criminal Law	4	30000
	民商法学 Civil Law and Commercial Law	4	30000
	经济法学 Economic Law	4	30000
马克思主义学院 School of Marxism	中国近现代史基本问题研究- 全英文项目 Study on the Basic Problems of Modern Chinese History- English-taught	4	45000
社会发展学院 School of Social Development	民俗学 Folklore	4	30000
	人类学 Anthropology	4	30000
	人类学- 全英文项目 Anthropology- English-taught	4	45000
	人口学 Demography	4	30000
	社会学 Sociology	4	30000

闵行校区博士专业 Ph.D Programs on Minhang Campus

院系所 Schools & Departments	招生专业名称 Programs	学制 YR	学费(年) Tuition (YR)
社会发展学院 School of Social Development	社会工作与社会政策 Social work and Social policy	4	30000
	体育教育训练学 Theory of Sports Pedagogy and Training	4	38000
体育与健康学院 School of Physical Education and Health Care	运动人体科学 Human Movement Science	4	38000
	体育人文社会学 Humane and Sociological Science of Sports	4	38000
传播学院 School of Communication	新闻学 Journalism	4	38000
	传播学 Communication	4	38000
美术学院 School of Fine Arts	艺术学 Arts	4	38000
音乐学院 School of Music	艺术学 Arts	4	38000
地理科学学院 School of Geographic Science	地图学与地理信息系统-中文/英文 Cartography and Geography Information System- in Chinese/English	4	35000
	自然地理学-中文/英文 Physical Geography- in Chinese/English	4	35000
	人文地理学-中文/英文 Human Geography- in Chinese/English	4	35000
生态与环境科学学院 School of Ecological and Environmental Science	环境工程-中文/英文 Environmental Engineering- in Chinese/English	4	35000
	生态学-中文/英文 Ecology- in Chinese/English	4	35000
	环境科学-中文/英文 Environmental Science- in Chinese/English	4	35000
生命科学学院 School of Life Sciences	生物化学与分子生物学-中文/英文 Biochemistry and Molecular Biology- in Chinese/English	4	35000
	动物学-中文/英文 Zoology- in Chinese/English	4	35000
	生态学-中文/英文 Animal Ecology- in Chinese/English	4	35000
河口海岸科学研究院 Institute of Estuary and Coastal Research	河口海岸学-中文/英文 Estuarine and Coastal Science- in Chinese/English	4	35000
	海洋生物学-中文/英文 Marine Biology- in Chinese/English	4	35000
	海洋化学-中文/英文 Marine Chemistry- in Chinese/English	4	35000
	物理海洋学-中文/英文 Physical Oceanography- in Chinese/English	4	35000
	海洋地质-中文/英文 Marine Geology- in Chinese/English	4	35000

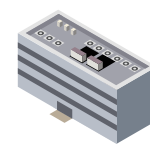
闵行校区博士专业 Ph.D Programs on Minhang Campus

院系所 Schools & Departments	招生专业名称 Programs	学制 YR	学费(年) Tuition (YR)
河口海岸科学研究所 Institute of Estuary and Coastal Research	自然地理学-中文/英文 Physical Geography- in Chinese/English	4	35000
	生态学-中文/英文 Ecology- in Chinese/English	4	35000
	环境科学-中文/英文 Environmental Science- in Chinese/English	4	35000
精密光谱科学与技术国家重点实验室 State Key Laboratory of Precision Spectroscopy	光学-中文/英文 Optics- in Chinese/English	4	35000
物理与电子科学学院电子科学系 School of Physics and Electronic Science	电子科学与技术 Electronic Science and Technology	4	35000
通信与电子工程学院 School of Communication & Electronic Engineering	通信与信息系统-中文/英文 Communication and Information Systems- in Chinese/English	4	35000
	集成电路科学与工程-中文/英文 Integrated Circuit Science and Engineering- in Chinese/English	4	35000
数学科学学院 School of Mathematics	基础数学-中文/英文 Fundamental Mathematics- in Chinese/English	4	35000
	数学教育-中文/英文 Mathematics Education- in Chinese/English	4	35000
	应用数学-中文/英文 Applied Mathematics- in Chinese/English	4	35000
	计算数学-中文/英文 Computational Mathematics- in Chinese/English	4	35000
	运筹学与控制论-中文/英文 Operations Research and Cybernetics- in Chinese/English	4	35000
化学与分子工程学院 School of Chemistry and Molecular Engineering	高分子化学与物理 Chemistry and Physics of Polymers	4	35000
	物理化学 Physics Chemistry	4	35000
	有机化学 Organic Chemistry	4	35000
	无机化学 Inorganic Chemistry	4	35000
外语学院 School of Foreign Languages	英语语言文学 English Language and Literature	4	30000
	外国语言学及应用语言学 Linguistics and Applied Linguistics in Foreign Language	4	30000



Eligibility

申请条件



- 1、持有效护照的非中国籍公民。
- 2、具有相应的学历或学位:
 - (1) 硕士项目申请者须具有相当于中国学士学位或以上的学历。
 - (2) 博士项目申请者须具有相当于中国硕士学位或以上的学历。
- 3、申请中文授课项目者：文科、经济类、艺术类专业的申请者须通过HSK5级 (210分以上) 或HSK6级 (180分以上)；理科专业申请者（经济类除外）须通过HSK5级 (180分以上)。

申请英文授课项目者应提供有效英语语言能力证明或英文授课项目学习经历证明（详见申请材料语言水平证明），母语为英语的申请者无需提供英语水平证明。

1. Non-Chinese citizen with a valid passport.
2. Master programs applicants should have Bachelor's degree or an equivalent degree to Bachelor's degree (or above) in China. Doctoral programs applicants should have Master's degree or an equivalent degree to a Master's degree (or above) in China.
3. Chinese-taught programs applicants in humanities, arts, and economics majors should pass HSK5 (210 or above) or HSK6 (180 or above); Applicants in science majors (excluding economics) should pass HSK5 (180 or above). English-taught programs applicants should have effective English Language Test Certificate or official proof of taking English-taught programs (For details please refer to the Language Proficiency Certificate). Native English speakers do not need to submit the English Certificate.

Application Documents

申请材料



- 1、华东师范大学国际学生入学申请表
请登录在线申请系统 (<http://xsapply.ecnu.edu.cn>) 在线填写申请表。
- 2、毕业证书和学位证书
硕士项目申请者须提交本科学历证书或学位证书。
博士项目申请者须提交本科及硕士学历证书或学位证书。
 - ①原件扫描件，非中英文的需提供经公证的中文或英文翻译件。
 - ②应届毕业生在申请时提供预计毕业证明（预计取得学位证明的时间应早于2024年8月31日），注册报到时须补交毕业证书和学位证书原件。
- 3、官方出具的完整成绩单
硕士项目申请者，须提交本科期间完整的成绩单。
博士项目申请者，须提交硕士及本科期间完整的成绩单。
应届生可先提交现阶段成绩单，最终成绩单须在入学前补交。
原件扫描件，非中英文的需提供经公证的中文或英文翻译件。
- 4、语言水平证明
 - ①中文授课：需提供有效期（2年）内的HSK证书。文科、经济类、艺术类专业的申请者须通过HSK5级（210分以上）或HSK6级（180分以上）；理科专业申请者（经济类除外）须通过HSK5级（180分以上）。在中国高校使用中文完成本科或硕士学习的申请者，须提供毕业学校出具的证明，经我校审核认可后，可免交HSK成绩证明。
 - ②英文授课：提供以下英语语言考试证书或提供英文授课项目学习经历证明，或其他同等英语水平证明（须经我校审核认可）。

a) 英语语言考试

英语语言考试	IELTS(academic)	TOEFL	Cambridge English
最低要求	6.0 (overall)	80	B2

1. ECNU International Students Application Form
Please log into the online application system at xsapply.ecnu.edu.cn to fill in the application form.
2. Graduation and Degree Certificate
Master's degree program applicants should submit the Bachelor's degree certificate. Doctoral degree program applicants should submit both Master's and Bachelor's degree certificates.
 - ①Scanned original documents. If documents are not in Chinese or English, a notarized and translated version in Chinese or in English is required.
 - ②Graduating students should provide a certificate of impending graduation, and the expected time to obtain the degree certificate should be earlier than August 31, 2024. The original Graduation certificate and diploma must be submitted for the registration.
3. Official Academic Transcript
Master's degree program applicants should submit the academic transcript of the undergraduate study. Doctoral degree program applicants should submit academic transcripts of both graduate and undergraduate studies.
 - ①Applicants who will not graduate before the application deadline shall provide the current academic transcript. In this case, the completed academic transcript must be submitted before the registration.
 - ②Scanned original documents. If documents are not in Chinese or English, a notarized and translated version in Chinese or in English is required.
4. Language Proficiency Certificate
 - ①For Chinese-taught programs: effective (within 2 yrs) HSK certificate. Chinese-taught programs applicants in humanities, arts, and economics majors should pass HSK5 (210 or above) or HSK6 (180 or above); Applicants in science majors (excluding economics) should pass HSK5 (180 or above). Applicants who complete undergraduate or master's studies in Chinese must provide a language certificate issued by the university they graduated from. The language certificate will be reviewed to decide if the applicant can be exempted from submitting the HSK score certificate.
 - ②For English-taught programs: English Language Test Certificate or official proof of taking English-taught programs, or other equivalent English proficiency certificates which must be reviewed and approved by ECNU.

a) English Language Test

English Language Test	IELTS (academic)	TOEFL	Cambridge English
Base Line	6.0 (overall)	80	B2





b) 英文授课项目学习经历

- ①所获本科或硕士学位的授课、考试语言均为英语。
- ②学习单位提供官方抬头信纸打印的官方证明。英语授课证明须由校级部门（如注册办公室、研究生院等）签发。

5、两封推荐信

推荐人须为副教授或相应职称以上的学者，或者相关行业内的资深专业人士。

用中文或英文书写，推荐信的签发日期应晚于2023年9月1日，推荐信需包含如下信息：推荐人职称、工作单位、联系电话、email及推荐人签名。

6、个人陈述

字数：硕士1000字以上，博士1500字以上。

语言：中文（申请中文授课专业）或英文（申请英文授课专业）。

内容：请从学术背景、与申请专业有关的研究工作经历及成果、攻读研究生阶段的学习和研究计划以及毕业后的发展目标等几个方面进行陈述。

个人陈述须突出申请者学业能力、科研水平、综合素质等信息。

7、个人研究成果

已发表的学术文章目录及摘要，其他原创性研究成果（如有请提供）等。

博士项目申请者须提交硕士学位论文的摘要页（*不需要提供全文，只需提供摘要页）。

8、护照复印件（包括个人信息页和来华签证页）

9、有效期（六个月）内的体检报告

申请人应严格按照《外国人体格检查表》中要求的项目进行检查，需提供血液检查的详细报告，缺项、未贴本人照片或照片上未盖骑缝章、无医师和医院签字盖章的《外国人体格检查表》无效。

10、无犯罪记录证明

申请人须提交由所在地公安机关出具的有效期限内的无犯罪记录证明，通常为提交申请之日前6个月以内的证明文件。非中英文的需提供经公证的中文或英文翻译件。

11、获奖证明

12、研修计划（博士项目申请者）

* 博士项目申请者建议提前联系导师

b) Proof of Taking English-taught Programs

①Applicants should complete the undergraduate or master's studies in English.

②The official proof with official institution letterhead should be issued by the university departments, such as registration office or graduate school instead of the departments or supervisors.

5. Two Recommendation Letters

Written in Chinese or English by scholars who hold the title of associate professor or higher, or senior professionals in a related academic field. The issue date of the recommendation letter should be later than September 1st, 2023. Recommendation letter MUST include: designation of the recommender, place of work, contact phone number, email address and recommender signature.

6. The Personal Statement

Words: above 1000 words for master applicants and above 1500 words for doctoral applicants.

Language: Written in Chinese for Chinese-taught programs or English for English-taught programs.

Content: Include but not limited to personal study or work experience, academic research outcome, research plan, personal goal after graduation.

The academic and research ability should be highlighted.

7. The Research Achievement

Catalogue and abstract of published papers, or other documents that prove academic ability (not compulsory);

Doctoral applicants should provide the abstract of Master degree thesis instead of the full text.

8. Photocopy of Passport (including personal information page and Chinese visa pages if applicants have been in China)

9. Effective (within 6 months) Health Certificate

Physical examination report must cover all of the items listed in the Foreigner Physical Examination Form, and provide the detailed blood test report. Incomplete forms or forms without the sealed photograph of the applicant, the official stamp of the hospital, or signature of physician are considered as invalid.

10. Non-Criminal Certificate (notarized photocopy in English or Chinese).

Applicants shall submit a valid Certificate of Non-Criminal Record (or Police Clearance Certificate) issued by the local public security (such as the police station), usually issued within six months prior to the submission date of the application.

11. Award Certificates

12. Research Proposal (Ph.D Applicants)

* Doctoral programs applicants are suggested to contact with academic supervisors beforehand.

Supplemental Documents Required by School or Institute

专业学院申请补充材料



- 1、申请学习艺术类专业的学生，须提供本人作品。
- 2、申请国际中文教育硕士的学生还需提供：一篇与国际中文教育专业相关的小论文（1000字左右）。
- 3、申请国际中文教师奖学金的申请者须提交HSKK证书：
硕士项目：中级60分以上
博士项目：高级60分以上

1. Applicants for art related majors should submit the portfolio.
2. Applicants for Master Program of Teaching Chinese to Speakers of Other Languages should prepare an essay related to the major (around 1000 words).
3. Applicants for ICLTS (International Chinese Language Teachers Scholarship)
Master program: HSKK Intermediate ≥ 60
Doctoral program: HSKK Advanced ≥ 60

Application Procedures

申请录取流程



1、在线申请

登录华东师范大学国际学生在线申请系统 <http://xsapply.ecnu.edu.cn>，注册并填写申请，上传相关申请材料，在线支付申请费800元，请注意无论是否被录取，申请费一旦支付成功将不予退还。

*如申请奖学金项目，请同时在相关奖学金申请网站上填写申请信息。

2、在线跟踪申请状态

请关注邮箱或登录你在华东师范大学申请网站上注册的账号查询申请进度和状态。

*请确保你的邮箱地址正确并定期查看邮件，否则可能会错过重要信息（如面试时间等）。

3、录取与入学

可在华东师范大学国际学生在线申请系统查询录取结果。录取学生须严格按照录取通知书上规定的时间来校报到注册，报到时将核验毕业证书原件、学位证书原件等。未取得相应证书者，将被取消入学资格。

*申请者无需邮寄纸质申请材料。申请过程中，我校及院系招生部门有权要求申请者提供申请材料的书面版原件或者指定认证机构出具的认证文件供进一步查验。

1. Apply online

Log into ECNU International Students online application website: <http://xsapply.ecnu.edu.cn/>. Please register and submit the online application. Upload application documents and pay the 800 RMB application fee online, which won't be refunded no matter applicants are admitted or not.

*Scholarship applicants should also register and submit the application form at scholarship website.

2. Track the application status online

Check the email box or log into the ECNU online application account to track your application status.

*Make sure the email address is correct and check the email box from time to time, otherwise you might miss some IMPORTANT INFORMATION, eg. the arrangement of interview etc.

3. Admission and University Enrollment

The result of the application will be announced through the application account. Admitted students must register on the mentioned date on admission letter and bring the original graduation certificate and degree. The enrollment will be canceled if the relevant certificates is not provided.

*Applicants do not need to send the hard copy of the application documents by post.

ECNU has the rights to require applicants to provide original application materials or authentication documents issued by a designated institution for further inspection.



Scholarships

奖学金



类型 Type	申请途径 Website	资助内容 Contents	截止日期 Deadline	备注 Notes
中国政府奖学金A类 Chinese Government Scholarship Type A	驻外机构 Local Chinese Embassy or Consulate	全额奖学金（学费，住宿费，来华保险，生活费）或部分奖学金 生活费发放标准： 硕士：3000元/月 博士：3500元/月 Full Scholarship (Tuition Fee, Accommodation, Insurance, Monthly Stipend) Or Partial Scholarship; Monthly Stipend: Master: 3000 RMB/Month PhD: 3500 RMB/Month		具体请咨询当地 中国大使馆 Depends on the requirement of the local Chinese Embassy or Consulate
中国政府奖学金B类 Chinese Government Scholarship Type B	网上申请 ECNU Website: http://lxapply.ecnu.edu.cn Scholarship Website: https://studyinchina.csc.edu.cn/#/login	全额奖学金（学费，住宿费，来华保险，生活费） 生活费发放标准： 硕士：3000元/月 博士：3500元/月 Full Scholarship (Tuition Fee, Accommodation, Insurance, Monthly Stipend); Monthly Stipend: Master: 3000 RMB/Month PhD: 3500 RMB/Month	3月1日 March 1	华东师范大学 机构代码: 10269 *ECNU code: 10269
上海市政府奖学金A类 Shanghai Government Scholarship Type A	网上申请 ECNU Website: http://lxapply.ecnu.edu.cn Scholarship Website: http://study.edu.sh.gov.cn/apply/	全额奖学金（学费，住宿费，来华保险，生活费） 生活费发放标准： 硕士：3000元/月 博士：3500元/月 Full Scholarship (Tuition Fee, Accommodation, Insurance, Monthly Stipend); Monthly Stipend: Master: 3000 RMB/Month PhD: 3500 RMB/Month	5月31日 May 31	
上海市政府奖学金B类 Shanghai Government Scholarship Type B		部分奖学金（学费，来华保险） Partial Scholarship (Tuition Fee, Insurance)		
国际中文教师奖学金 International Chinese Language Teachers - Scholarship	网上申请 ECNU Website: http://lxapply.ecnu.edu.cn Scholarship Website: http://cis.chinese.cn	全额奖学金（学费，住宿费，来华保险，生活费） 生活费发放标准： 硕士：3000元/月 博士：3500元/月 Full Scholarship (Tuition Fee, Accommodation, Insurance, Monthly Stipend); Monthly Stipend: Master: 3000 RMB/Month PhD: 3500 RMB/Month	5月15日 May 15	申请国际中文教育专业的学生，须经中外语言交流合作中心指定机构推荐方可申请国际中文教师奖学金。 Applicants of Teaching Chinese to Speakers of Other Languages must get recommended by the recommending institutions assigned by Centers of Language Education and Cooperation to apply for ICLTS.

*工商管理专业硕士和中外联合培养项目（国际商务-中法双学位）不开放奖学金申请。

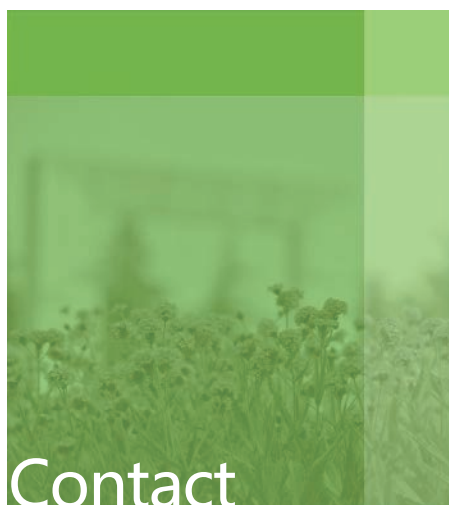
*具体信息请以当年奖学金网站通知为准。

*Programs of MBA and International Business (Double-degree) are not open for scholarship applicants.

*Detailed information should be referred to the notice on the scholarship website.

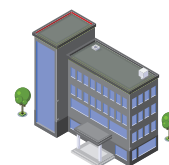
其他事项 Application Remarks

1. 申请者应保证所提供的申请信息及申请材料真实准确，一经招生单位或认证部门查证为不属实，将不予录取或取消学习资格。
 2. 学生不可同时在两所学校注册学籍（联合培养学位项目除外），一经查实，将取消学籍。
 3. 申请者应及时关注我校及招生院系发布、发送的相关文件、通知，因申请者疏忽等个人原因造成的一切后果由其本人承担。
1. Applicants must ensure that the application information and application materials provided are true and accurate. If any application documents are verified to be not true, the application, admission or study qualification will be cancelled.
 2. Once admitted, applicants cannot be registered at two universities at the same time (except for double degree programs). Once found, the study qualification will be cancelled.
 3. Applicants should actively pay close attention to the latest relevant information posted at the website or sent by the school/department applicants are applying to. Applicants must read and follow the posted instructions/deadlines timely, and any consequences for failing to do so will be the responsibility of the applicant solely.



Contact Information

联系方式



孙老师 SUN Laoshi
Email: xqsun@gec.ecnu.edu.cn

殷老师 YIN Laoshi
Email: yyin@ied.ecnu.edu.cn

中国上海市中山北路3663号华东师范大学物理楼253室
邮编: 200062
电话: +86-21-62232013 / +86-21-62238353
网址: <http://lxs.ecnu.edu.cn/>
微信公众号: ecnugec

Program Officer: SUN Laoshi
Email: xqsun@gec.ecnu.edu.cn

Program Officer: YIN Laoshi
Email: yyin@ied.ecnu.edu.cn

Tel: +86-21-62232013 / +86-21-62238353
Add: Room 253 International Students Office, Physics Building, 3663 Zhongshan
North Road, East China Normal University, Shanghai.
Zip code: 200062
Website: <http://lxs.ecnu.edu.cn/>
Official WeChat ID: ecnugec

