



**EAST CHINA  
NORMAL UNIVERSITY**



**ECNU**

EAST CHINA NORMAL UNIVERSITY

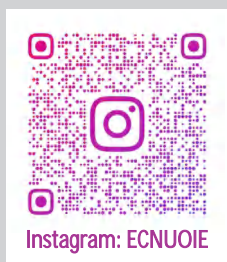
# 华东师范大学 留学生入学指南



## 联系我们:

华东师范大学国际教育管理中心  
200062  
中国上海中山北路3663号  
格致楼（原物理楼）二楼服务大厅  
电话: +86-21-62232013  
62238353  
传真: +86-21-62238352  
电子信箱: [lx@ecnu.edu.cn](mailto:lx@ecnu.edu.cn)  
网址: <https://lx.ecnu.edu.cn>

## 关注我们:



# CONTENTS

## 目录

欢迎信

### 一、来华准备

(一) 签证	01
(二) 保险	01
(三) 体检	02
(四) 微信	02

### 二、生活提示

(一) 整理行装	03
(二) 日常花销	04
(三) 住宿及预定	05
(四) 何时到达	07
(五) 如何到达华东师范大学	07
(六) 出发备忘录	08

### 三、到达

(一) 办理住宿登记	09
(二) 联系国际教育管理中心	09
(三) 入学和注册报到	10
(四) 缴费及退费规定	11
(五) 体检	11
(六) 申请居留许可	12
安全须知	13
地图	14

## 欢迎信

亲爱的新同学：

欢迎你！当你翻开这本行前指南时，一段崭新的故事正等着你来书写。请允许我，代表华东师范大学国际教育管理中心，向你送上最热烈的祝贺和最诚挚的问候——很高兴你选择了这里，成为我们多元大家庭的新一员。

在这里，你会遇到来自全球一百多个国家和地区的伙伴。不同的语言、不同的故事，会在美丽的校园里自然而然地交汇，碰撞出意想不到的灵感。无论你来自哪里，希望华东师大能很快让你找到一份归属感。

远赴异国求学，本身就是一件很酷也很有挑战的事。我们没法替你走完这段路，但很乐意做你身边的“导航”和“队友”——学业上有疑问、生活上有困惑、或者只是想找人聊聊天，都可以来敲敲我们的门。我们准备了很多活动，等着和你一起去探索、去试错、去发现。如果遇到困难，别担心，我们会为你提供支持和帮助。

接下来的日子，专心去学习，你会从研究中得到乐趣。当然，愿你不只获得知识和文凭，也获得几个能一起旅行的朋友、一些让你眼前一亮的瞬间，和一份“原来我可以”的底气。世界很大，你的新篇章，就从这里开始落笔。

期待与你相见！

蒯曙光

华东师范大学国际教育管理中心主任

# 来华准备

## PREPARATION BEFORE COMING TO CHINA

### STUDY VISA

#### 签证

##### 申请学生签证

在收到我校寄发的录取通知和JW202/JW201表后，您可以向中国驻贵国使领馆申请学生签证。

如果获得X1学习签证入境，在到达中国后的**30天之内**，您必须在华东师范大学完成所有的学生注册手续，然后向上海市出入境管理局申请居留许可。如果您在这30天内没有申请居留许可，将会承担相应的法律责任。

根据中国政府相关规定，学校不得接受持非学习类短期签证入境的外国人入学。如免签证入境或持L等短期签证的外国留学生不能直接办理学习类签证或居留许可，应在免签证或短期签证停留有效期内出境，申请X1签证再次入境后，申请办理学习类居留许可。

#### 注意

如果外国人在中国逗留期间，签证或居留许可过期，即属非法居留，出入境管理局对当事人进行处罚。所以，您来上海之后，必须经常检查并确保您的签证或居留许可在有效期内。

### INSURANCE

#### 保险

根据中华人民共和国教育部相关规定，为加强留学生在华学习期间的安全保障，留学生必须购买来华人员综合保险（人民币800元/年）。为避免开学报到期间保险缴费高峰，您可在开学报到前登陆[www.lxbx.net](http://www.lxbx.net)（留学保险网）并通过网上支付购买综合保险（奖学金生请先自行购买，到中国后费用会补发），具体购买流程：

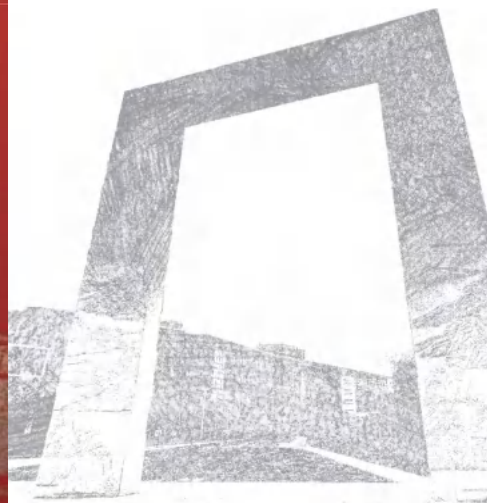
- 登录[www.lxbx.net](http://www.lxbx.net)，点击“购买保险”并以报名时护照号登录。
- 选择华东师范大学，并选择国任保险。购买保险时，仔细核对个人信息，学生如在报名后更新过护照，请在购买页面填写新的护照号。
- 选择拟投保保期和费用：**12个月800元，6个月400元。
- 按网上提示进入付费流程并支付。



# PHYSICAL EXAMINATION

## 体检

在您申请来华学生签证 (X1) 时, 中国驻贵国使领馆可能会根据您的来华学习期限和所需申请的签证情况要求提供《外国人体格检查记录》。体检详细要求和办法请咨询中国驻贵国使领馆。



# WECHAT APP

## 微信

微信是中国人最常使用的通讯工具之一。在中国生活时, 通过微信, 你可以联系中国的朋友、同学、老师, 也可收到来自国际教育管理中心的通知。

### ● 第一步

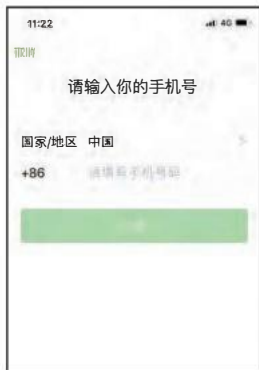
打开手机上的软件商店 (App Store), 在搜索栏中输入“微信”或者“wechat”。

### ● 第二步

找到微信, 点击下载。

### ● 第三步

打开微信, 根据提示, 注册微信号码。  
(一般要求使用手机号码注册)



### ● 第四步

使用微信。  
您可以使用微信发送文字、语音、图片、视频、文件等。当你需要添加朋友时, 可以通过搜索微信号码或者“扫一扫”功能添加。



现在, 打开微信“扫一扫”就可以关注ECNUOIE的公众号并及时获得各类通知和信息。



# 生活提示

## LIFE TIPS

### WHAT TO PACK

#### 整理行装

#### 整理行装

以下几点建议仅供参考：



#### • 电器

中国的电压是220V，如您国家的电器输入电压无法与其兼容，相应的变压器和多功能插座、插头（上海也能买到）便可解决这些问题。



#### • 衣服

根据上海的气候情况，冬装和夏装是最常用的衣服。夏季最高气温38°C/100°F，冬季最低气温-2°C/28°F，请至少带一件毛线衣或羊毛衫和一件羽绒服过冬。



#### • 生活用品

校内住宿学生需自备床上用品，例如：枕头、被子、床单等。学校周边有许多连锁超市与商店可以购买生活用品。

# LIFE EXPENSES

## 日常花销

### ● 货币与银行

在中国流通的货币是人民币（元），在缴纳学费和住宿费时，都需要以人民币来支付。所以在来中国以前，建议您按照自己的需要，兑换好一些人民币现金，在机场也可进行外币兑换。

为了方便您在中国的生活，我们建议您可在学校附近的中国工商银行或中国银行开设银行账户。

### ● 生活费

留学生一年的基本生活费用大约需要35,000元，包含用餐、零花费用等。校内住宿费用一年大概需要15,000元到26,000元。

### ● 学费

自费留学生的学费标准根据不同类别和年限各不相同。学生需提前在申请系统内在线支付学费。

(人民币/年/人)

项目	文科	理科	艺术
本科	22,000	24,000	28,000
本科（工商管理英文授课）	单学位 54,000/年（共缴纳4年）		双学位 108,000/年（共缴纳2年）*
本科（环境设计、视觉传达设计英文授课）	50000/年		
硕士	25,000	28,000	32,000
硕士（英文授课）	35,000		
硕士（国际商务英文授课）	单双学位84,000/年（共缴纳2年）*		
硕士（MBA）	154,000		
博士	30,000	35,000	38,000
博士（英文授课）	45,000		
研究学者	2,500/月	2,800/月	3,200/月

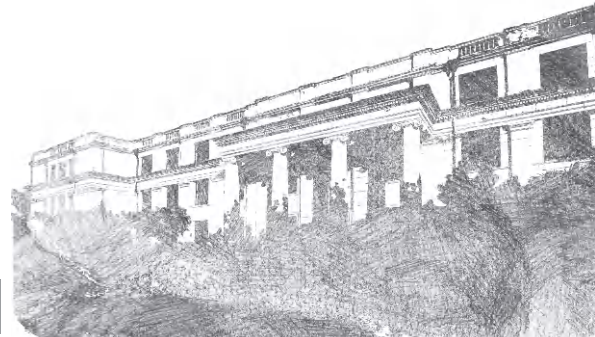
\*双学位项目外方学费另交给外方学校。

\*其中，研究生学费为学术学位费用。专业学位费用请查阅我校网站：

[https://lxs.ecnu.edu.cn/cn/admission/degree\\_programs/graduate\\_program/programs/list.htm](https://lxs.ecnu.edu.cn/cn/admission/degree_programs/graduate_program/programs/list.htm)

# ACCOMMODATION AND RESERVATION

## 住宿及预订



### 住宿预订

1. 自费学生录取后需支付学费后，可申请校内住宿。
2. 宿舍预定系统将在固定时间开放。新生住宿预订通常在6月底（秋季学期）或1月初（春季学期）开放。学校会提前邮件通知，请按通知在线预订并缴费，房源有限，先到先得。
3. 成功预订宿舍者请在预订日期当天入住，提前到达可能无房或需额外付费。
4. 奖学金生住宿由学校统一安排，等待邮件通知。

### 校内住宿房型及价格

住宿楼	房型	房间设施	价格 (元/天/人)
普陀1号楼	经济双人间	公卫、空调、宽带	40
普陀2号楼	经济双人间	公卫、空调、宽带	40
	标准双人间	独卫、空调、宽带	60
普陀国交中心	经济双人间	公卫、空调、宽带	50
	标准双人间	独卫、空调、宽带	70
闵行12、14号楼	单人间	独卫、空调 (宽带、电费自理)	35

注：以上价格为住一学期的价格，凡住宿以上校内宿舍的长期留学生，需在规定时间内在线完成房费支付。



### ● 入住安排须知

学生需在预定入住的日期持录取通知书及护照到宿舍前台办理入住登记手续，办理入住登记手续的信息如下：

宿舍楼	工作时间	电话
普陀1号楼	每天 8:00-20:00	+86-21-62233220
普陀2号楼	每天 8:00-20:00	+86-21-62235035
普陀国交中心	每天 8:00-20:00	+86-21-62035893
闵行12、14号楼	每天 8:00-17:00	+86-21-84342985/54342765

注：成功预定校内宿舍后，请留意你的住宿楼宇。入住时间为14:00之后。如果你上午抵达且房间已准备好，可以办理入住手续。如果你在非工作时间抵达学校，可以先到宿舍前台领取房卡入住，并在下一工作日补办入住登记手续。

### ● 校外住宿

#### 上海国际学生服务中心

地址：上海市普陀区中山北路3489弄28号（近华东师范大学正门）

电话：+86-21-52780889 (x128)

工作时间：周一至周四 9:00-21:00

房间类别	房间设施	价格（元/月/人）
标准双人间	独卫、空调、宽带	2700
标准单人间	独卫、空调、宽带	4500

注：入住时需付1000元押金，正常退房时返还。

### ● 预定方式：

学校可协助我校新生预定住宿，有需要可联系沈老师：sjun@admin.ecnu.edu.cn。来信请写明自己的学号、姓名、护照号并注明“申请SISSC”字样。

### ● 周边住宿建议：

如果您打算住在校外，还可以从各种租房平台（例如自如APP等）寻找租房的信息。华东师范大学附近的住房根据不同的设施条件和服务，每月租金为人民币4000元-6000元不等。

## WHEN TO ARRIVE

何时到达

境外学生需遵守国家出入境规定，安排好到达中国的日期，以便按时到学校报到注册并办理签证相关事宜。我们不建议您过早到达，因为留学生持有仅30天的X1签证入境。在签证过期以前，您必须到学校注册报到并在国际教育管理中心的协助下准备好各类签证申请的必要材料。这个过程需要两周或更长时间，如因为您个人提前到达并且没有及时联系国际教育管理中心而无法按期申请居留许可，后果将非常严重。

## HOW TO GET TO ECNU

如何到达华东师范大学

### ● 上海浦东国际机场—普陀校区

1. 地铁2号线至中山公园站，转乘67路（终点站）或出租车至华东师范大学，全程车费约9-25元；
2. 乘坐出租车，车程1小时，车费约200元-250元。

提示：乘出租车时请向司机出示学校地址。

### ● 上海虹桥国际机场—普陀校区

1. 地铁2号线至中山公园站，转乘67路（终点站）或出租车至华东师范大学，全程车费约6-20元；
2. 地铁2号线至中山公园站，转地铁3号线。
3. 乘坐出租车，车程30分钟，车费约40元。

### ● 上海浦东国际机场—闵行校区

1. 乘坐出租车，车程60-70分钟，车费约200元。
2. 市域机场线至景洪路站，转乘地铁15号线至紫竹高新区站，转乘958路或出租车至虹梅南路剑川路站下，全程车费约23-35元。

提示：乘出租车时请向司机出示学校地址。

### ● 上海虹桥国际机场—闵行校区

1. 地铁2号线至娄山关路站，转乘地铁15号线至紫竹高新区站，转乘958路或出租车至虹梅南路剑川路站下，全程车费约8-25元。
2. 乘坐出租车，车程40分钟，车费约100元。

#### 安全警示：

1. 请根据机场指示牌，乘坐正规的出租车。
2. 到达目的地时，记得向出租车司机索取发票。
3. 乘坐出租车时可向司机出示学校地址。（校门地址信息请参看第8页）

校区	校门	地址	开放时间	备注
普陀校区	正门	中山北路3663号	24小时	
	北门	金沙江路145号	6:00-23:00	离留学生1号楼近
	西门	枣阳路460号	6:00-23:00	离留学生2号楼近
	西南门	枣阳路788号	6:00-23:00	离国际交流服务中心宿舍楼近
闵行校区	正门	虹梅南路5800号	24小时	

● 普陀校区-闵行校区校车时间表(周一至周五)

中山北路发车时间 (枣阳路788号校内停车场)	闵行校区发车时间 (秋实湖)
6:30	6:30
11:50	11:50
16:50	16:50
21:00	21:00

## PRE-DEPARTURE CHECK LIST

### 出发备忘录

● 在您准备出发来中国之前，请再次核查一下是否已经做好如下准备：

- 申请并获得学生签证
- 阅读并了解学生签证的相关规定
- 已预定住宿
- 准备好电源或插座转换器（在到达后也可购买）
- 重要身份材料的复印件（如护照、飞机票、毕业证明等）
- 开学报到所需的材料（录取通知书和JW202/201、照片、体检报告原件、最高学历证书原件、学费在线支付凭证）
- 可在中国使用的支付宝账户、现金、银行卡，并开通国际银行业务

# 到达

## ARRIVAL IN CHINA

### REGISTRATION FORM OF TEMPORARY RESIDENCE

#### 办理住宿登记

在您到达中国的24小时内，您必须取得《住宿登记表》，

若住校内的留学生公寓，在公寓前台办理入住手续时可以领取《境外人员住宿登记表》。

若住在校外，必须：

通过扫描右侧二维码，完成住宿登记并下载《境外人员住宿登记表》；若在线注册登记未成功，  
请去居住地派出所办理住宿登记手续，并领取《住宿登记表》。



#### 注意

办理居留许可需提供《住宿登记表》，请妥善保管该表并复印备用。

在校期间，如果你的校外住宿地址有变化，须在入住新居所24小时内重新办理校外住宿登记手续，程序同上。

### CONTACT OFFICE OF INTERNATIONAL EDUCATION

#### 联系国际教育管理中心

到达中国后，如有问题可以与国际教育管理中心取得联系。

#### 国际教育管理中心服务大厅

中国上海中山北路3663号物理楼（格致楼）2楼（校园地图14号）

电话：0086-21-62232013/62238353

Email: lxs@ecnu.edu.cn

## ACADEMIC ENROLLMENT AND REGISTRATION

### 入学和注册报到



新生须按录取通知书规定的时间由本人到校办理报到注册手续。留学生须至国际教育管理中心和所在院系分别进行注册。因特殊原因不能准时报到者，应事先向国际教育管理中心办理请假手续，假期一般不超过两周。未请假或已请假但未获批准以及已获准假但未在准假限期内报到者，作放弃入学资格处理。在开学报到期间须查验最后学历证明，请准备好最高学历证书原件。

#### 重要信息通知

学校重要通知将通过邮件/网站/微信群形式发送，请学生关注本人邮箱和微信，查收来自国际教育管理中心的通知。

#### 现场注册

国际教育管理中心注册地点：物理楼(格致楼)（普陀校区校园地图14号）

注册时请带好下列物品：

- 录取通知书
- 《外国来华留学人员签证申请表》(JW202/JW201)
- 护照原件及复印件
- 《住宿登记表》复印件
- 本国所做体检报告原件
- 最高学历证书（原件）

开学报到流程：

注册报到、验证护照、费用查验、保险核验、领取新生大礼包

院系集中注册地点：

具体院系报到地点以《入专业报到通知单》为准。

# FINANCIAL REGULATIONS

## 缴费及退费规定

### ● 缴费规定

1. 长期留学生的所有费用以人民币结算。
2. 缴纳学费截止日期：开学报到注册截止日。

缴费地点：普陀校区国际教育管理中心  
物理楼（格致楼）

缴费方式：现金或有银联标志的银行卡  
(缴费后方能注册并办理相关签证申请)

### ● 退费规定

1. 学费：在规定的报到日期前提出放弃入学的（需提供适当的理由或证明），退还全额学费；  
在规定报到日期起两周内办理退学手续的，退还70%学费；  
超过两周办理退学手续的，学费不予退还。因违反中国法律或校纪校规而退学的学生，学费不予退还。
2. 住宿费：入住时需一次性付清一个学期的住宿费。  
学生在规定的入住日期前提出退宿的，可退还全额住宿费；  
在规定的入住日期起两周内提出退宿的，按短期房价计算扣除已产生费用，退还剩余住宿费；  
两周以后提出退宿的，住宿费不予退还。
3. 凡提出退费者，提交书面退费申请及交回原始发票。退学费前应注销学习签证，否则不予办理退费手续。
4. 退费以人民币结算。
5. 本规定适用范围为华东师范大学各类留学生。  
以上规定其解释权归属于华东师范大学国际教育管理中心。

# PHYSICAL EXAMINATION

## 体检

需要健康检查或验证的对象：

1. 持X1签证入境的学生；
2. 持X2签证入境，在中国持续停留时间超过180日的学生；
3. 初次申请居留许可的学生；
4. 居留许可过期3个月以上，再次申请居留许可的学生。

### 在上海体检需要准备的文件及费用：

- 护照原件和复印件（首页及签证页复印件）
- 学生证或大学录取通知书原件
- 3张护照用照片
- 6个月内的体检报告原件（如在入境前做过体检）

费用：体检费（0元-500元），快递费，体检中心拍照费（若未带照片），具体费用以体检中心告知为准。

### 上海国际旅行卫生保健中心地址：

金浜路15号（近哈密路） / 咨询电话：62688851 / 公众号预约



## APPLY FOR A RESIDENCE PERMIT 申请居留许可

### 什么是居留许可？

居留许可是由中国公安部颁发给在华学习或工作的外国人合法居留的证件。持X1签证来华的学历留学生必须在入境后30天内申请办理居留许可。申请居留许可的有效期与您所缴纳学费的学期时间相一致。在其有效期内，您可以多次出入境。

### 何处可以办理居留许可？

您可以选择到以下任意一个出入境管理局办理居留许可。

地址	电话	办公时间
浦东新区民生路1500号	+86-12367	周一至周六, 9:00 — 17:00
普陀区府村路125号		周一至周六, 8:30 — 17:00
闵行区中春路4099号		周一至周六, 8:30 — 17:00

### ● 办理居留许可需多少费用？

- 居留许可（一年以内）¥400
- 居留许可（一至三年）¥800

### ● 办理居留许可需要哪些文件和证明？

1. 护照
2. 录取通知书
3. 外国来华留学人员签证申请表（JW201或JW202）
4. 健康证明（由上海国际旅行卫生保健中心提供）
5. 住宿登记表复印件（参考第9页“办理住宿登记”）
6. 资金证明（由国际学生本人准备，根据上海市出入境的要求，办理签证时可能要求提供）
7. 外国籍学生办理证件申请函（由国际教育管理中心提供）

### 注意

外事警官在查验您所提交的材料后，将出具一张收据，上有领取护照的日期和所需费用。签证费用在领取护照时支付。来华后若有任何签证问题，请及时与国际教育管理中心联系，咨询相关事宜。





## 华东师范大学来华留学生法制与安全须知

亲爱的留学生同学们：

欢迎大家来到华东师范大学学习！为了您能拥有一个平安、健康的校园生活环境，请您在留学期间务必严格遵守中国的法律和法规，尤其需要注意以下三个方面。



在中国，吸毒、藏毒、运毒、贩毒等涉毒行为都将属于严重违法行为，特别提醒大麻在中国也同样被列为毒品。凡涉毒者，一经发现，都将受到严厉的法律制裁，包括罚款、行政拘留、驱逐出境，严重者甚至会被判刑。同时，学校也将按校纪校规给予涉毒学生开除学籍处理。



如果您在留学期间想使用摩托车或电动车，请务必通过合法途径购买，并按规定前往公安机关办理相关证照申领登记手续后方可上路。另外，您还须至学校保卫处申领摩托车及电动车专用车证并签署《校园文明驾驶承诺书》后，才能驾车进入学校，学校相关部门将会同公安部门对校内无牌、无证、外牌、套牌及大功率（改装）摩托车及电动车进行查扣处理。



交通事故是留学生最常见的安全风险之一，曾经发生过多起留学生因交通事故重伤甚至不幸去世的案例，也有留学生违规驾驶导致他人重伤的案例。为了避免自己和他人造成伤害以及经济损失，请您务必遵守交通法规，注意交通安全。

关于您留学期间其他法律及安全问题，请您认真学习中国法律和学校纪律的规定，并严格遵守。如有问题，可向国际教育管理中心咨询。



华东师范大学  
国际教育管理中心

# 普陀校区 PUTUO CAMPUS



NO. DEPARTMENTS/OFFICES

- 5. No.1 International Student Residence Hall
- 14. Gezhi Building (Physics Building)
- 22. Campus Card Center

院系/办公室

- 留学生公寓1号楼
- 格致楼 (物理楼)
- 校园卡中心

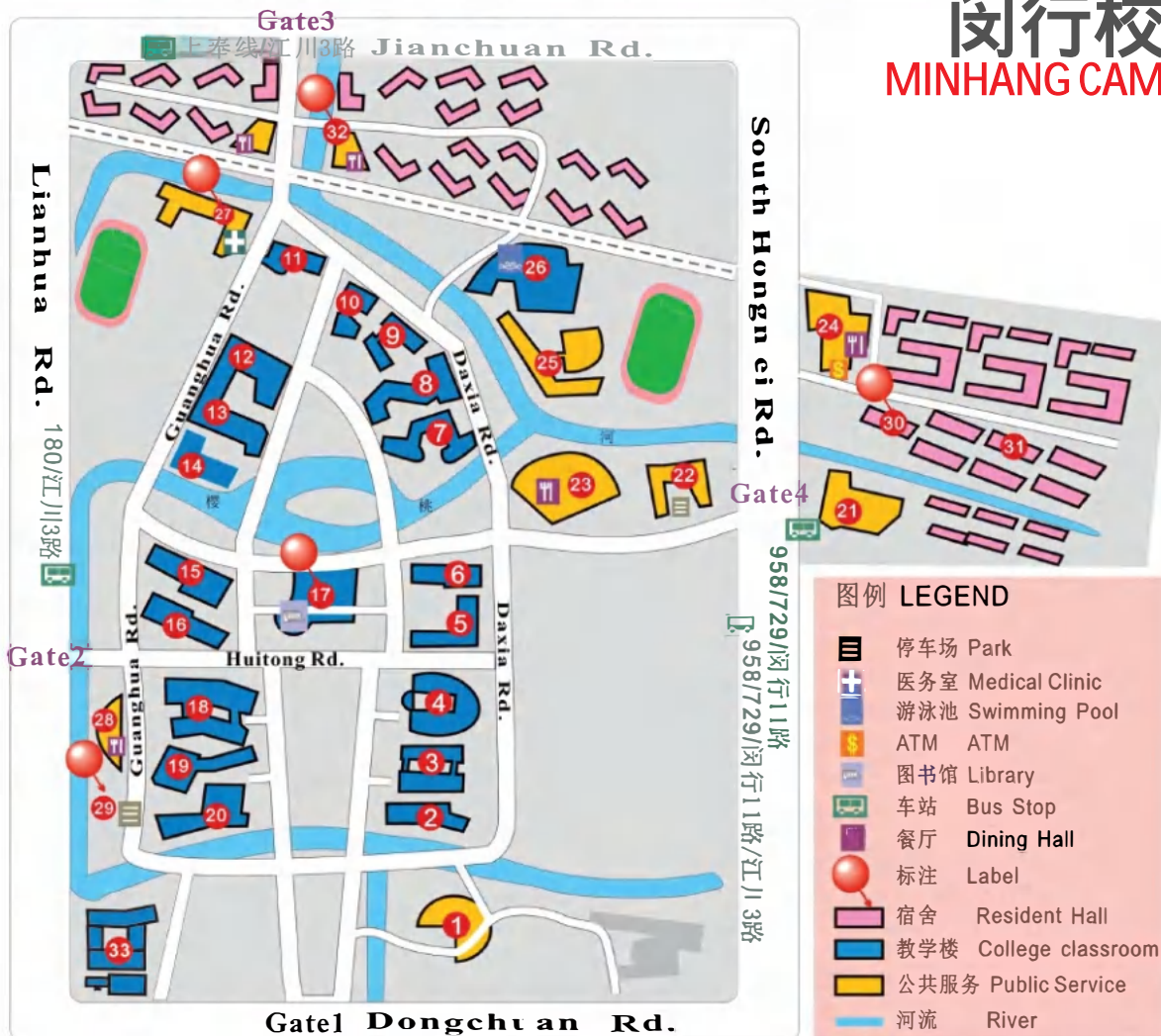
NO. DEPARTMENTS/OFFICES

- 25. International Exchange Service Centre
- 39. No.2 International Student Residence Hall

院系/办公室

- 国际交流服务中心
- 留学生公寓2号楼

# 闵行校区 MINHANG CAMPUS



- 1 办公楼 Administrative Office Building
- 2 外语学院 School of Foreign Languages
- 3 法商学院 School of Law and Business
- 4 人文学院 School of Humanities
- 5 第一教学楼 No.1 Class Building
- 6 第二教学楼 No.2 Class Building
- 7 传播学院 艺术学院  
School of Communication and Arts
- 8 实验A楼 Laboratory Building A
- 9 实验B楼 Laboratory Building B
- 10 实验C楼 Laboratory Building C
- 11 实验D楼 Laboratory Building D
- 12 资环学院  
School of Resources and Environment Science
- 13 生命科学院 School of Life Science
- 14 化学系 Department of Chemistry
- 15 第四教学楼 No.4 Class Building
- 16 第三教学楼 No.3 Class Building
- 17 图书馆(二楼校园卡中心)  
Library (Campus Card Center on 2<sup>nd</sup> floor)

- 18 金融统计学院 数学系  
School of Finance and Statistic, Department of Mathematics
- 19 信息科学技术学院  
School of Information Science and Technology
- 20 物理系 Department of Physics
- 21 教师之家宾馆 Faculty House
- 22 学校停车场 Campus Park
- 23 华闵餐厅 Hua Min Dining Hall
- 24 秋林阁餐厅 Dining Hall
- 25 大学生活动中心 Student Activities Center
- 26 体育与健康学院 School of Sports and Health Science
- 27 校医院 Campus Clinic
- 28 秋实阁餐厅 Dining Hall
- 29 校车上车点 Campus Shuttle Bus Station
- 30 14号留学生宿舍 NO.14 International Students Dorm  
留学生办公室 International Students Office
- 31 12号留学生宿舍 NO.12 International Students Dorm
- 32 河东餐厅(二楼清真餐厅)  
Hedong Dining Hall (2<sup>nd</sup> Floor for Muslims Only)
- 32 河东餐厅(二楼清真餐厅)
- 33 河口海岸大楼 Estuarine and Coastal Building



换乘磁浮线、金山铁路需出站重新购票或刷公交卡,不享受连续计费。  
 11号线花桥、光明路、高丰路站位于江苏省。  
 下列车站,持公交卡可出站30分钟内一票换乘并享受连续计费;单程票需重新购票。  
 ○ 虹桥2号航站楼(2号线、10号线,往市区方向可站内换乘)  
 ○ 上海火车站(1号线与2号线、4号线需出站换乘)  
 ○ 南京西路(2号线、12号线、13号线)  
 ○ 娄山关路(2号线、15号线)  
 ○ 长清路(7号线、13号线)

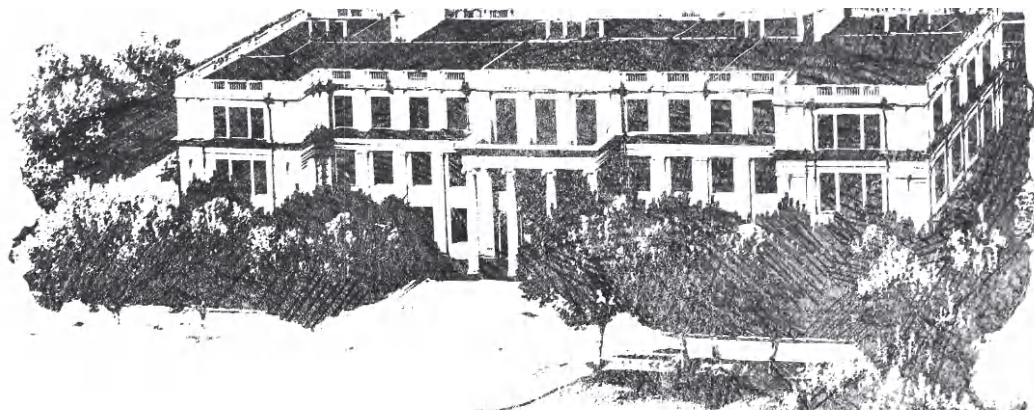
机场	火车站	磁浮线	1号线	11号线	18号线	19号线
换乘车站	换乘车站	换乘车站	换乘车站	换乘车站	换乘车站	换乘车站
出站换乘车站	出站换乘车站	出站换乘车站	出站换乘车站	出站换乘车站	出站换乘车站	出站换乘车站



# 上海轨道交通网络示意图

## SHANGHAI METRO NETWORK MAP

本图经变形处理,不反映真实地理信息,仅供参考。版权所有,不得翻印。 版本号:20201001



**ECNU**  
EAST CHINA NORMAL UNIVERSITY

# PRE-DEPARTURE INFORMATION FOR INTERNATIONAL STUDENTS



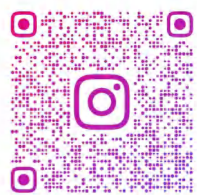
**EAST CHINA  
NORMAL UNIVERSITY**



## Contact Us:

Office of International Education  
East China Normal University  
2nd Floor Reception Hall,  
Gezhi Building  
(Physics Building), 3663  
North Zhongshan Road,  
Shanghai 200062, China  
Tel: 86-21-62232013 62238353  
Fax: 86-21-62238352  
E-mail: [lxsex@ecnu.edu.cn](mailto:lxsex@ecnu.edu.cn)  
Website: <https://lxsex.ecnu.edu.cn>

## Follow Us:



Instagram: ECNUOIE



微信 Wechat



# CONTENTS

Welcome to East China Normal University

## I. Preparation Before Coming to China

A. Study visa	01
B. Insurance	01
C. Physical examination	02
D. WeChat App	02

## II. LIFE TIPS

A. What to pack	03
B. Life expenses	04
C. Accommodation and reservation	05
D. When to arrive	07
E. How to get to ECNU	07
F. Pre-departure check list	08

## III. Arrival in China

A. Registration form of residence	09
B. Contact the Office of International Education	10
C. Academic enrollment and registration	10
D. Financial regulations	12
E. Physical examination	13
F. Apply for residence permit	14
G. Safety notification	15
H. Map	16

## Welcome to East China Normal University

Dear New Students,

Welcome! As you open this pre-departure guide, a brand-new story is waiting for you to write. Please allow me, on behalf of the **Office of International Education, East China Normal University**, to offer you our warmest congratulations and sincerest greetings. We are delighted that you chose to come here and become a new member of our diverse family. Here, you will meet friends from over 100 countries and regions. Different languages and different stories will naturally cross paths on our beautiful campus, sparking unexpected inspiration. Wherever you come from, we hope ECNU will soon give you a sense of belonging.

Going abroad to study is a cool and challenging experience. We cannot walk this path for you, but we would be glad to be your "navigator" and "teammate" by your side. If you have questions about your studies, feel puzzled about daily life, or just want to chat with someone, feel free to knock on our door. We have prepared many activities, ready to explore, try things out, and make discoveries alongside you. If you encounter difficulties, don't worry – we are here to support and help you.

In the days ahead, focus on your studies, and you will find joy in academic research. Of course, may you leave here not only with knowledge and a diploma, but also with a few friends to travel with, some eye-opening moments, and the quiet confidence of "I could do it after all." The world is vast, and your new chapter begins right here.

Looking forward to meeting you!  
Sincerely,

蒯曙光

Director  
Office of International Education  
East China Normal University

# PREPARATION BEFORE COMING TO CHINA

## STUDY VISA

### Apply for student visa

You must enter China with a valid passport and student visa (X1 visa). Please apply for the student visa with the admission notice and visa application form (JW202 or JW201) through the Chinese embassy or consulate in your country.

X1 visa is a student single entry clearance. **Within 30 days** after arriving in China you **MUST** complete all the procedures of registration at ECNU and apply at the Shanghai Exit-Entry Administration Bureau (SEEAB) for the residence permit which is a multiple entry clearance. If you do not complete this within 30 days, you will bear the corresponding legal responsibility.

Please do NOT come to China without a visa or with a short-term visa other than student visa, in which case you will not be able to get residence permit and have to leave China to apply for X1 student visa.

**It is strictly stipulated in China that if you remain in China with an expired visa, and you will get fined by SEEAB. In light of this case, please check the expiration date of your visa or residence permit carefully and make sure it's always valid.**

## INSURANCE

Subject to the regulations of the Chinese Ministry of Education, it is required that all international students should purchase Comprehensive Insurance for Foreigners Staying in China (800RMB/year), so as to ensure the safety of their stay in China.

Please log in to [www.lxbx.net](http://www.lxbx.net) and purchase through the online payment. The student with scholarship covering the Comprehensive Insurance should purchase insurance by themselves and get the money reimbursed. Please follow the instructions of purchase below:

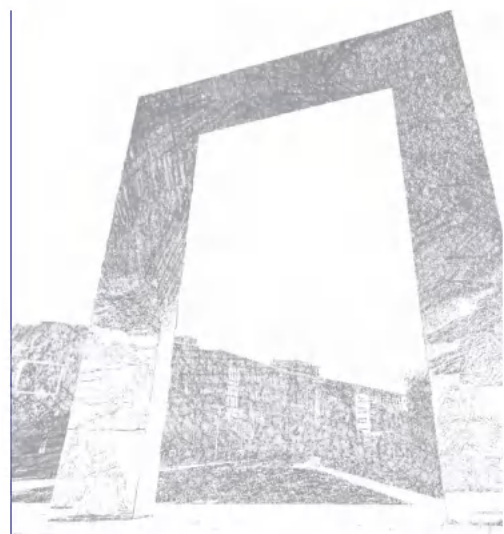
- Please visit [www.lxbx.net](http://www.lxbx.net), click "Buy Insurance" and log in with the passport number that you apply for ECNU program.
- Choose "ECNU" & "GUOREN" and check your personal information. If you have renewed your passport after application, please enter the new passport number.
- Choose 800RMB for 12 months, 400RMB for 6 months.
- Follow the online instructions and complete the payment.





## PHYSICAL EXAMINATION

When applying for the student visa (X1), the Chinese embassy or consulate in your country may require you to provide Physical Examination Report for Foreigners depending on your duration of study in China and the visa you need to apply for. For detailed requirements and instructions, please consult the Chinese embassy or consulate in your country. If you have a physical examination at your country, please bring the report when coming to study in China.



## WECHAT APP

WeChat is one of the most popular communication apps for Chinese people. When you are studying in China, it is recommended to use WeChat to contact with your Chinese friends, classmates, teachers, and get some important notices from Office of International Education.

### How to use WeChat?

- **Step 1**

Open the app store on your cell phone. Search "WeChat".

- **Step 3**

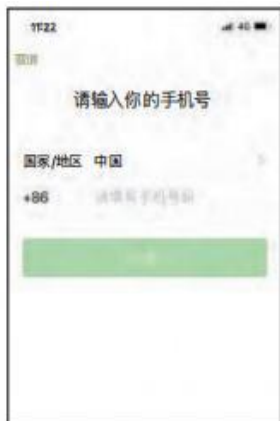
Register a WeChat ID according to the direction. (A valid cell phone number will be needed.)

- **Step 2**

Find WeChat and download.

- **Step 4**

Explore your WeChat and you can scan the QR code to follow ECNUOIE.



# LIFE TIPS

## WHAT TO PACK

The following suggestions are for reference only.



- **Electrical equipment**

The electricity supply system in China is 220V. Moreover, the plug and socket may be incompatible so please check before departure. Multi-function power plug and voltage transformer can solve this problem, and they are also available in Shanghai.



- **Clothing**

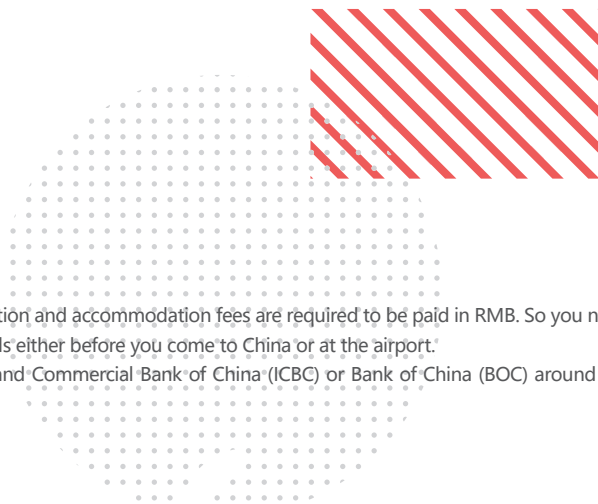
According to the climate conditions in Shanghai, winter and summer clothes are most commonly used. The highest temperature of summer is up to 38°C/100°F and the lowest temperature of winter is -2°C/28°F. So bring at least one warm sweater or cardigan and a down jacket for winter.



- **Life necessities**

Students living on campus need to bring their own beddings, such as pillows, quilts, bed sheets, and etc. There are many supermarkets and grocery shops around the university where you can buy daily necessities.

# LIFE EXPENSES



- **Currency and Bank**

The currency used in China is Renminbi (RMB, yuan). Tuition and accommodation fees are required to be paid in RMB. So you need to exchange some currency according to your own needs either before you come to China or at the airport.

We recommend you to open an account in Industrial and Commercial Bank of China (ICBC) or Bank of China (BOC) around the University for your convenience.

- **Cost of living**

You will need approximately 35,000 RMB a year to cover your living expenses, which covers food and daily expenses. The accommodation fee for living on campus is about 15,000 ~ 26,000 RMB per year.

- **Tuition fees**

The tuition fees of self-financed students are different according to your program and your study period. Students should pay the tuition fee in the online application system in advance.

**(RMB/one year/per person)**

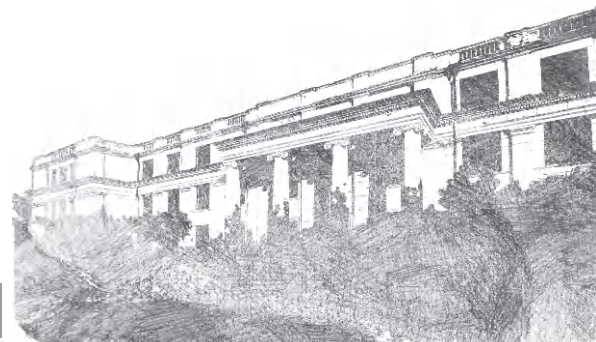
Program	Liberal Arts	Science	Arts
Undergraduate program	22,000	24,000	28,000
Undergraduate (BBA) program	Single degree 54,000/year (for 4 years)		Double degree 108,000/year (for 2 years)
English-taught Undergraduate's Program (Environmental Design, Visual Communication Design)	50000/year		
Master's program	25,000	28,000	32,000
English-taught Master's program	35,000		
MIB program	84,000/year (for both single and double degree; for 2 years)		
MBA program	154,000		
Doctoral program	30,000	35,000	38,000
English-taught Doctoral program	45,000		
Research scholar	2,500/Month	2,800/Month	3,200/Month

\*The tuition fees for double degree listed in the form only account for those at ECNU.

\*The graduate tuition fee refers to the academic degree program. For professional degree program fees, please refer to our university's website:

[https://lxs.ecnu.edu.cn/en/admission/degree\\_programs/graduate\\_program/programs/list.htm](https://lxs.ecnu.edu.cn/en/admission/degree_programs/graduate_program/programs/list.htm)

# ACCOMMODATION AND RESERVATION



## Accommodation Reservation

1. All self-funded students can apply for on-campus accommodation once they've been admitted and have paid the required tuition fees.
2. The accommodation reservation system only opens on the designated date. Freshmen could make a reservation at the end of June (for the fall semester) or early January (for the spring semester). You'll receive an email with the dorm reservation notice. Be sure to make your reservation and pay the accommodation fee as instructed. Spaces are limited and are given out on a first-come, first-served basis.
3. If you successfully reserve on-campus accommodation, please check in on the designated date. If you arrive early, there might not be a room ready for you, or you may have to pay an extra fee.
4. The university will arrange accommodation for scholarship students. Please check your email for related notices.

## On-campus Room Type and Price

International Students Dorm	Room Type	Facilities	Price (RMB/day/person)
PUTUO Dorm 1	Economic Double Room	public bathroom, AC, free internet	40
PUTUO Dorm 2	Economic Double Room	public bathroom, AC, free internet	40
	Standard Double Room	private bathroom, AC, free internet	60
PUTUO International Exchange Service Center	Economic Double Room	public bathroom, AC, free internet	50
	Standard Double Room	private bathroom, AC, free internet	70
Minhang Dorm 12 & 14	Single Room	private bathroom, AC, payable internet and electricity	35

**Note:** Accommodation fee of the on-campus international student dorms are paid by semester. Long-term students who want to live in the international student dorms mentioned above should pay the accommodation fee for a whole semester during the online reservation.



### • Check In

Students should take the Admission Notice and Passport to check in at the front desk of dormitory. The information about check-in and registration is listed as follows:

International Students Dorm	Office Hours	TEL
PUTUO Dorm 1	Everyday 8:00am-8:00pm	+86-21-62233220
PUTUO Dorm 2	Everyday 8:00am-8:00pm	+86-21-62235035
PUTUO International Exchange Service Center	Everyday 8:00am-8:00pm	+86-21-62035893
Minhang Dorm 12 & 14	Everyday 8:00am-5:00pm	+86-21-54342985/54342765

Note: Please pay attention to which dorm building you reserve successfully. You can check in after 2pm. If you arrive in the morning and room is available, you can check in the dorm. If you arrive at the non-office hour, you are allowed to get the room key from the reception and check in on the next working day.

### • Live off campus

#### Shanghai International Students Service Center

Address: No.28, North 3489 Zhongshan Road (by the main gate of Putuo Campus).

Tel: +86-21-52780889(X128)

Hours: 9:00am-9:00pm Mon-Thurs

Room Type	Facilities	Price (RMB/month/person)
Standard Double Room	private bathroom, AC, free internet	2700
Standard Single Room	private bathroom, AC, free internet	4500

Note:

1. Students need to pay a deposit of 1000 RMB when checking in, which will be refunded during normal check-out.
2. Booking Method: the university can assist new students with booking SISSC. If you need assistance, please contact Mr. Shen at [sjun@admin.ecnu.edu.cn](mailto:sjun@admin.ecnu.edu.cn). Please specify your student ID, name, passport number, and include "Application for SISSC" in your email.

### • Suggestions for living off campus

You can also choose to live off campus. According to different facilities, conditions and services, the accommodation fee ranges between 4000-6000 RMB per month (around university).

## WHEN TO ARRIVE

International students should abide by China's exit and entry regulations. Please book your flight in advance to ensure timely registration. We do not recommend arriving too early, as international students enter with only a 30-day X1 visa and you need to get residence permit before X1 visa expires. If you arrive too early and fail to contact the Office of International Education promptly which cause a delay in applying for a residence permit, you need to bear the consequences.

## HOW TO GET TO ECNU

### • Departure from Hongqiao Airport to Putuo Campus:

1. Subway Line 2 to Zhongshan Park, and then transfer to Bus No. 67 or take a taxi to ECNU, which will cost about 6-20RMB.
2. Subway Line 2 to Zhongshan Park, and then transfer to Line 3.
3. It will cost about 40RMB for a 30-minutes' taxi drive from Shanghai Hongqiao Airport to ECNU.

### • Departure from Hongqiao Airport to Minhang Campus:

1. Subway Line 2 to Loushanguan Rd. Station, and then transfer to Line 15 and get off at Zizhu Hi-tech Park Station, then take Bus No. 958 or a taxi to South Hongmei Rd and Jianchuan Rd, which will cost about 8-25RMB.
2. It will cost about 100RMB for a 40 minutes taxi drive from Hongqiao Airport to ECNU Minhang campus.

### • Departure from Pudong International Airport to Putuo Campus:

1. Subway Line 2 to Zhongshan Park, and then transfer to Bus No. 67 or take a taxi to ECNU, which will cost about 9-25RMB.
2. It will cost about (200-250RMB) for a 1-hour taxi drive from Pudong International Airport to ECNU.

### • Departure from Pudong International Airport to Minhang Campus

1. It will cost about 200 RMB for a 60-70 minutes taxi drive from Pudong International Airport to Minhang campus.
2. Shanghai Suburban Railway to Jinghong Rd. Station, and then transfer to Line 15 and get off at Zizhu Hi-tech Park Station, then take Bus No.985 or a taxi to South Hongmei Rd and Jianchuan Rd, which will cost about 23-35RMB.

### SAFETY TIPS

1. Take safe and legitimate taxi according to the airport signs.
2. After arrival you should ask for a receipt from the taxi driver.
3. You can show the school address to the driver when taking a taxi (Please refer to the gate info on Page 8).

## PRE-DEPARTURE INFORMATION FOR INTERNATIONAL STUDENTS

Campus	Gate	Address	Hours	Notes
Putuo Campus	Main Gate	No. 3663, North Zhongshan Road <i>Zhong shan bei lu, san liu liu san hao, hua dong shi fan da xue</i>	24 hours	
	North Gate	No. 145, Jinshajiang Road <i>Jin sha jiang lu, yi bai si shi wu hao</i>	6:00-23:00	Near International Students Dorm 1
	West Gate	No. 460, Zaoyang Road <i>Zao yang lu, si bai liu shi hao</i>	6:00-23:00	Near International Students Dorm 2
	Southwest Gate	No. 788, Zaoyang Road <i>Zao yang lu, qi bai ba shi ba hao</i>	6:00-23:00	Near International Exchange Service Center
Minhang Campus	Main Gate	No. 5800, South Hongmei Road <i>Hong mei nan lu, wu ba ling ling hao</i>	24 hours	

### • School Shuttle buses Timetable (Mon. ~ Fri.)

Putuo Campus (Parking lot by front gate)	Minhang Campus (Qiu Shi Dining Hall)
6:30	6:30
11:50	11:50
16:50	16:50
21:00	21:00

## PRE-DEPARTURE CHECK LIST

Before you get ready to leave for China, please double check if you have prepared everything as follows:

- | Apply for and get the study visa;
- | Read the relevant visa regulations in this booklet;
- | Reserve or arrange an accommodation;
- | Prepare voltage transformer and/or socket adapter (which can be purchased after arrival as well);
- | Copies of important identity materials (such as JW202/201 form, passport, plane ticket , graduate certificate, physical examination report);
- | Necessary materials for registration (Admission Notice, JW202/201 form, ID photos, original copy of physical examination report, original copy of the highest educational qualification, receipt of online tuition payment;
- | The activated Alipay account, sufficient cash and credit cards for living and study expenses.

# ARRIVAL IN CHINA

## REGISTRATION FORM OF RESIDENCE

**Within 24 hours upon your arrival, you must get the Registration Form of Residence.**

If you live on campus, you may get this form directly at the front desk in your residence hall.

If you choose to rent an apartment off-campus, you **MUST**: scan the QR code to register. Download the form once approved.

If you fail to register onsite, then you should go to local police station to register onsite and get the form.

**Note:**

You need to submit Registration Form of Residence when you apply for residence permit.

During your study here, if your address is changed, you need to go through the same procedures again to get a new Registration Form of Residence.

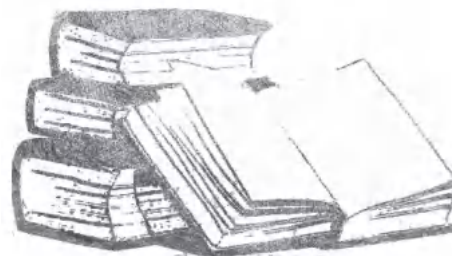
## CONTACT OFFICE OF INTERNATIONAL EDUCATION

After arriving in China, please contact the Office of International Education for emergencies.

### Office of International Education Reception Hall

2nd Floor Reception Hall, Physics Building (Gezhi Building),  
3663 North Zhongshan Road, Shanghai 200062, China (No.14 on campus map)  
Tel:0086-21-62232013; 62238353  
Email: [ixs@ecnu.edu.cn](mailto:ixs@ecnu.edu.cn)

## ACADEMIC ENROLLMENT AND REGISTRATION



All international students must come to school in person to register during the registration days as guided on the Admission Notice and register at your department afterwards. For those who cannot enroll/register on time due to special circumstances, please submit a written application along with the required proof before registration date. The delay of registration should be no longer than 2 weeks. Students who fail to apply, or didn't get the approval for the registration, or students who fail to register on time before the approved time period, will be deprived of the rights to enroll/register for school. Your original highest education diploma is required for confirmation during the registration, please bring it with you when register at ECNU

### Important Notice

The university will deliver the important notice through email/website/wechat group, so please carefully check your personal email and wechat message from the ECNU Office of International Education.





## Onsite Registration

**Registration venue:** Physics Building (Gezhi Building) (No.14 on Putuo campus map)

**Documents Required:**

- Admission Notice
- Visa Application Form (JW202/JW201)
- Your current passport and copies of the personal information page and visa page
- Registration Form of Residence
- All the original copies of your physical examinations
- Original Highest Education Diploma

**Registration Procedures:**

Register, Passport Check, Payment Check, Insurance Check, Freshman Gift

**Meeting Point for Department Registration :**

The specific registration location of your schools & departments should be referred to the Notice of School/Department Registration.

# FINANCIAL REGULATIONS

## Payment Terms and Conditions

1. All the expenses charged for long-term international students should be paid in RMB.
2. Deadline for tuition payment within the registration days.  
Payment Office: Physics Building (Gezhi Building), Office of International Education, Putuo campus.  
Payment Method: cash or bank card with Union Pay Logo.

## Refund Terms and Conditions

- 1. Tuition Fee:** Students who withdraw before the assigned registration date with proper reason or proof will get a full refund. Those who withdraw within the first two weeks after the registration date will receive a 70% refund of the tuition. Those who withdraw two weeks after the registration date will not be refunded.  
Students who get expelled due to violation of school regulations will not be refunded.
- 2. Accommodation Fee:** Students are required to pay the full amount of the accommodation fee (one semester) at a time.  
Those who withdraw before the assigned checkin date will get a full refund. Those who withdraw within the second week from the assigned check-in date, the costs of stay will be deducted (based on the daily price for short term stay), and you can get the balance for refund.  
Those who withdraw two weeks after the assigned checkin date will not be refunded.
3. To get a refund, students should submit a written application, return the original receipt for paid tuition and cancel the student visa.
4. The refund will settle in RMB.
5. The terms and conditions above are applicable to international students of ECNU. All rights reserved by the Office of International Education of ECNU.

# PHYSICAL EXAMINATION

Who must take the Physical Exam:

1. Students with X1 visa when enter China
2. Students with X2 visa and have stayed in China for over 180 days
3. Students who apply for the residence permit for the first time
4. Students who apply for a residence permit again and your previous residence permit has expired for over 3 months

## Documents and Fees required for Physical Examination in Shanghai

- Original and copy of your passport
- Admission Notice from the University
- 3 passport-sized photographs
- Original physical report done in 6 months (if applicable)

Fee: Examination Fee (0-500RMB), Postal Fee & Photo Fee (if you don't prepare in advance).

Detailed price will be announced by the physical center.

## Address of Shanghai International Travel Healthcare Center:

No.15 Jinbang Road (金浜路15号)

Phone Number: 0086-021-62688851

You can make an appointment by scanning the QR code.



## APPLY FOR A RESIDENCE PERMIT

### Who needs to apply for a Residence Permit?

International students who enter China with an X1 visa must apply for residence permit within 30 days upon entry. Your residence permit validity will be the same as your paid study period. You can have multiple entries within the valid period of your residence permit.

### Where do I go?

You may go to the SEEAB office below to apply for residence permit

Address	Telephone	Working hours
No. 1500 Minsheng Rd, Pudong New District	+86-21-12367	Mon-Sat, 9:00—17:00
No.125 Fucun Rd, Putuo District		Mon-Sat, 8:30—17:00
No.4099 Zhongchun Rd, Minhang District		Mon-Sat, 8:30—17:00

### How much do I have to pay?

- **Residence Permit** ( within one year validity ) ¥400
- **Residence Permit** ( 1-3 years validity ) ¥800

### What should I bring when I go to SEEAB?

- Passport
- Admission Notice
- Visa Application Form ( JW201 or JW202 )
- Health Qualification (from Shanghai International Travel Healthcare Center)
- One copy of Registration Form of Residence (Please refer to "Registration Form of Residence" on Page 9)
- Proof of funds (provided by students, it may be required by the SEEAB when applying for residence permit)
- Visa and Residence Permit Application Form (provided by the Office of International Education)

#### TIPS

If any assistance is needed when you are in SEEAB office, please contact Office of International Education directly. After verifying the documents you submitted, the police officer will issue a receipt showing the date of passport collection and the required fees. The visa fee is paid upon receipt of the passport.

## ECNU International Students Legal and Safety Notification

Dear International Students,

Welcome to study at East China Normal University! To ensure a safe and healthy campus, please follow the Chinese laws and rules during your study period, especially in the following three aspects.



1, In China, the use, possession, transportation or sale of drugs is a serious crime. We kindly remind you that MARIJUANA is listed as a type of drug as well in China. Once the crime is confirmed, you will receive severe legal consequences, including fines, detention, deportation or imprisonment in some severe cases. Also, you will also be expelled from the school according to the ECNU regulations.



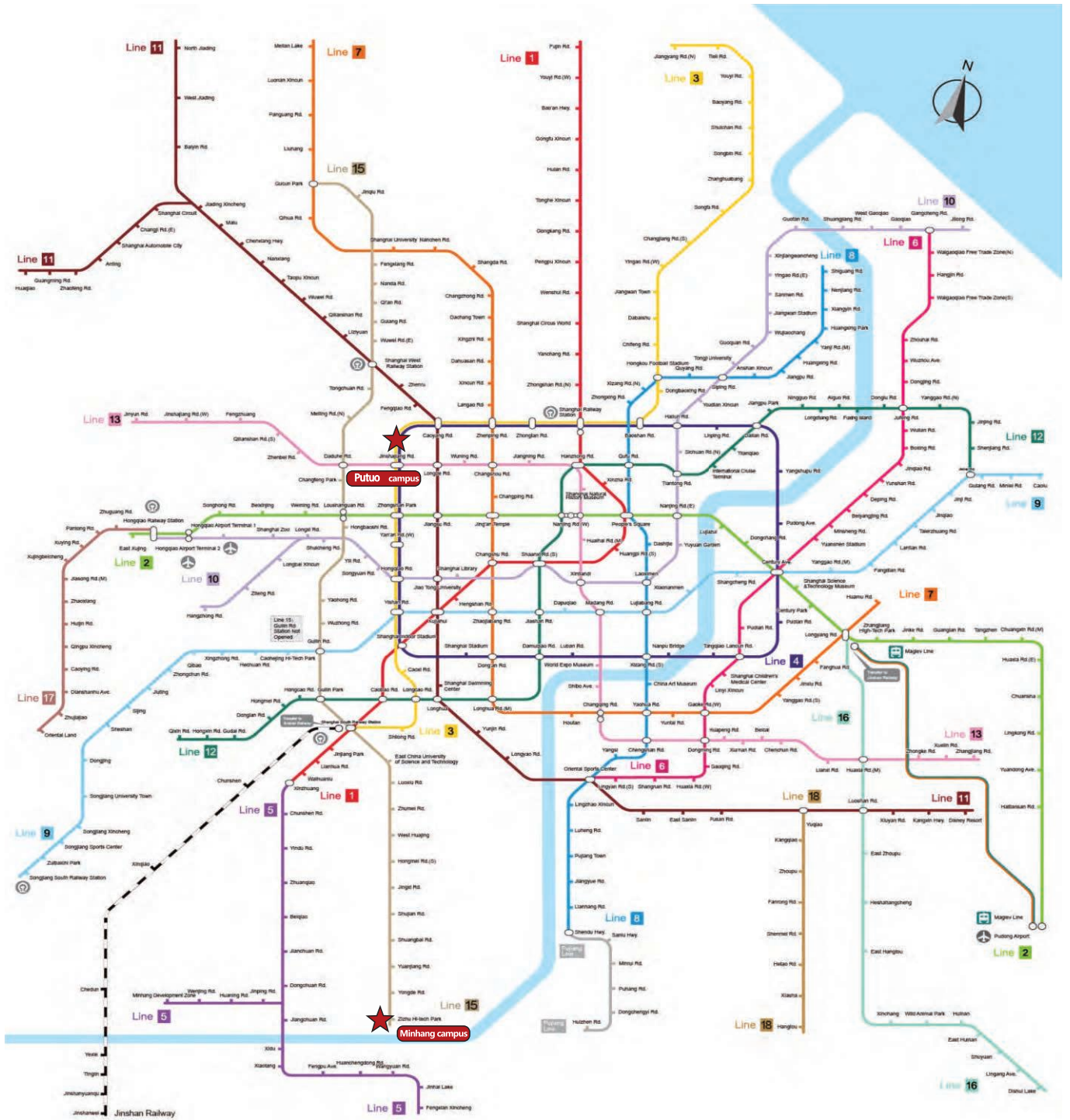
2, If you plan to ride a motorcycle or electric scooter during your study in China, please make sure that you make the purchase through legal way. You also need to submit the registration application to get the license plate before you can ride on the road. In addition, you need to sign the agreement at the campus security office to get the permission to ride your motorcycle or electric scooter on campus. ECNU will work with the police department to confiscate any motorcycle or electric scooter without valid Shanghai license plate, driver's license, or with engine tuning.



3, One of the highest risk that international students face with is traffic accidents. Multiple cases of traffic accidents that the international students were involved led to SEVERE INJURY OR EVEN DEATH unfortunately. In other cases, due to the international students' illegal driving, it caused others' severe injury. To avoid any harm and financial loss for yourself and others, you need to follow the traffic rules and be safe on the road.

For the sake of your own safety and free from legal issue during your study period in China, please study and follow the Chinese laws and school regulations carefully. You can also consult with the Office of International Education.

Office of International Education  
East China Normal University



Passengers transferring to Maglev Line / Jinshan Railway are not entitled to continuous fare charging and need to pay for new tickets or scan with public transportation card.  
 Huaqiao Station, Guangming Road Station and Zhongfeng Road Station of Line 11 are located in Jiangsu Province. Passengers holding public transportation card can transfer at the following stations with the same card and enjoy continuous fare charging within 30 minutes after getting out of the stations; those holding single-journey ticket need to buy another ticket to transfer.  
 □ Hongqiao Airport Terminal 2 (Line 2 and Line 10; in-station transfer allowed for trains bound for the downtown)  
 □ Shanghai Railway Station (Leaving the station to transfer between Line 1 and Line 3 / Line 4)  
 □ West Nanjing Road (Line 2, Line 12 and Line 13)  
 □ Loshangqian Road (Line 2 and Line 15)  
 □ Changyang Road (Line 7 and Line 13)

- ✈ Airport
  - 🚉 Railway Station
  - 🚝 Maglev Line
  - 🚇 Metro Line
  - 🌊 Huangpu River
  - 🚶 Single-line Station
  - 🔄 Interchange Station
  - 🚶 Out-of-system Transfer Station
- |   |  |   |   |   |  |   |
|---|--|---|---|---|--|---|
| <span style="color: red;">■</span> Line 1   | <span style="color: yellow;">■</span> Line 3 | <span style="color: purple;">■</span> Line 5  | <span style="color: orange;">■</span> Line 7      | <span style="color: lightblue;">■</span> Line 9   | <span style="color: brown;">■</span> Line 11         | <span style="color: pink;">■</span> Line 13 |
| <span style="color: green;">■</span> Line 2 | <span style="color: blue;">■</span> Line 4   | <span style="color: magenta;">■</span> Line 6 | <span style="color: cyan;">■</span> Line 8        | <span style="color: lightgreen;">■</span> Line 10 | <span style="color: darkgreen;">■</span> Line 12     | <span style="color: gold;">■</span> Line 15 |
| <span style="color: teal;">■</span> Line 16 | <span style="color: brown;">■</span> Line 17 | <span style="color: grey;">■</span> Line 18   | <span style="color: black;">■</span> Pujiang Line | <span style="color: black;">■</span> Maglev Line  | <span style="color: black;">■</span> Jinshan Railway |   |

# SHANGHAI METRO NETWORK MAP

The picture is for reference only.  
All rights reserved, reproduction prohibited.